

BACK TO THE OFFICE

MARTEX

INDICE

Back to the office	pag 03
Focus on your wellness	pag 06
Open space	pag 08
Bench	pag 12
Meeting	pag 16
Temporary work	pag 18
Common spaces	pag 22
Office sweet home	pag 25
Materials	pag 29



BACK TO THE OFFICE

In the past few months our lives, our approach to people and our way of working have been turned upside down.

The Covid-19 has changed not only our social life but particularly our working life.

How is it changing and how will the office layout change? What has smart working involved?

The reopening of the economy will challenge every company to quickly regain productivity and competitiveness without compromising health and safety.

Companies must make decisions with care and responsibility.

The safety and well-being of employees is now more crucial than ever; people must both be and feel safe.

So here is a guideline that will help us understand how Martex has responded to these needs, sharing what we have learned.

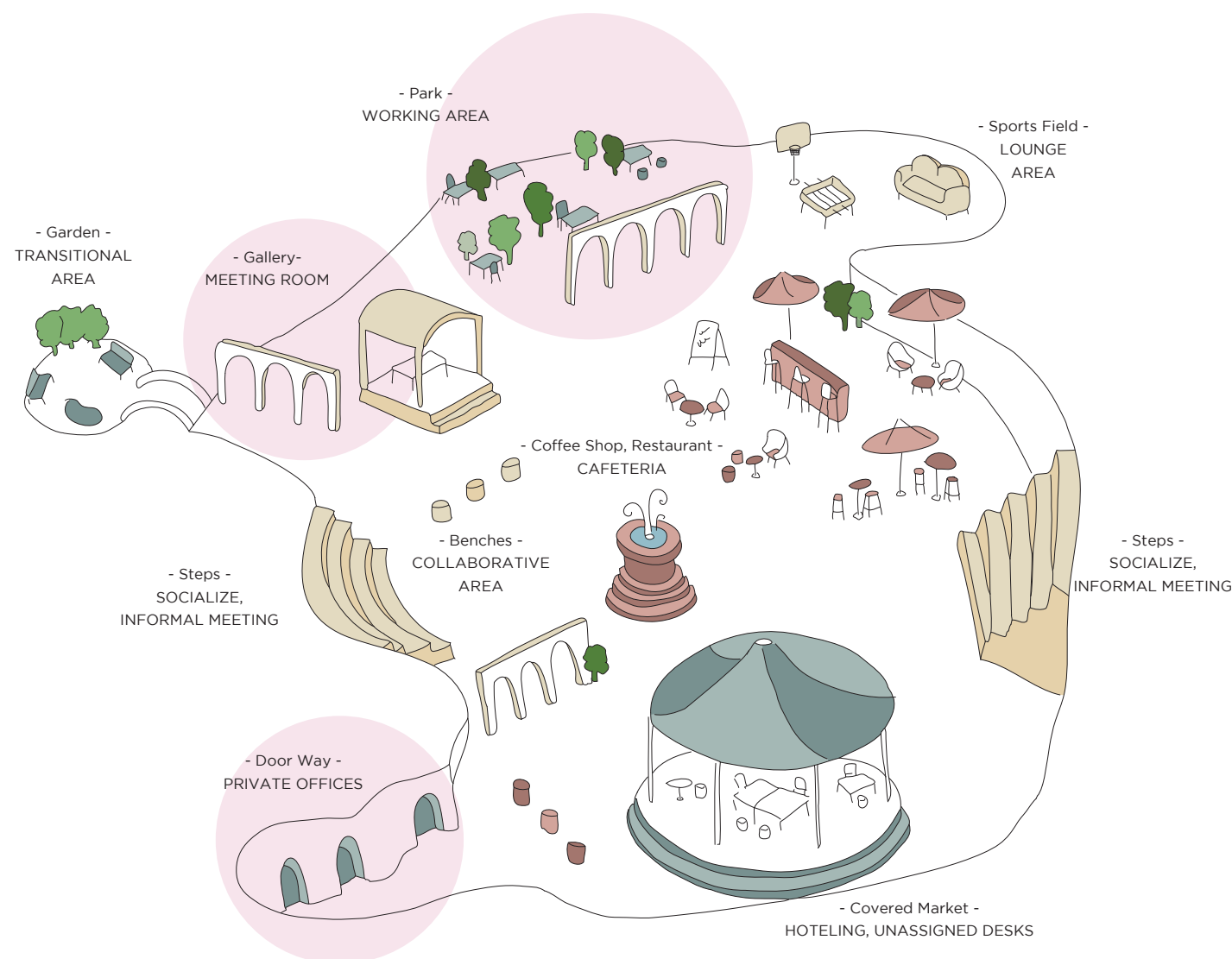
How the Martex concept “Piazza” evolves

Martex “La Piazza” (the town square) is the metaphor we used to represent the new ways of working that involved high levels of human interaction to foster creativity, innovation, speed, agility and consequently productivity.

These attributes now present a challenge to the post-COVID work environment as organizations strive to limit physical interactions.

Companies want to bring people back to the office because they know it is the best place for people to meet, interact and accomplish their jobs.

So in all areas of the “square” we need to adopt solutions that allow people to work well and safely.



Flexibility Mobility Transformation

LET'S USE FLEXIBLE ELEMENTS OVER PERMANENT SOLUTIONS

We do not know whether the change that is taking place will be permanent or only temporary, we only know that we have two types of scenarios that we have to face immediately:

- The first requires a transformation of the existing. What are the measures that we can adopt to the existing furniture following the new safety standards ?
- The second scenario is design. What layout proposals will we offer for new offices that comply with the new regulations?

For us in both cases the keywords are: FLEXIBILITY, MOBILITY, TRANSFORMATION.

Focus on your wellness

Let's take a layout of an office and find out together what solutions we can adopt whether as a design of new solutions or in an existing space. The main focus for both should be distance without separation, communication without total isolation.



Open space

These open spaces that have been the way to design offices around the world in recent years must now include separations.

In the office layouts, you can use mobile or fixed partitions, double-sided containers or greener solutions provided by plants and planters.



Double-sided bookshelves

Double-sided bookcases allow a visual space division, create the right distance between stations and allow high levels of storage.

The new Martex bookshelf is a modular system that allows a division of space for any need. It is made with aluminium profiles to which shelves, back panels, sides, doors, planters and TV holder elements can be added.



Nucleo corner

Galaxy storage combined with the Nucleo panels allows you to create functional kitchen or printing corners or simply to isolate these areas in the office space.



Open space



NUCLEO Freestanding panels with feet

Nucleo freestanding panels can be connected to each other for real space separations or to create work areas.



Storage

The storage units are available in various heights and widths with or without planters boxes to meet both storage and separation requirements.

NUCLEO freestanding panels on wheels

NUCLEO freestanding panels are ideal for easily separating work areas. Modular and easily reconfigurable, they allow a versatile separation of space.



Lockers

The lockers are part of the Galaxy collection and are cabinets with hinged doors equipped with special locks for storing documents or personal belongings in the workplace. Like all storage units they can be a proposal for separation.



Bench

For workstations with aggregate desks the solutions to divide people might be various.

- You could reconfigure the desks, moving them away from each other and creating a safe distance.
- You could rotate the desks 90° to position them in different directions.
- When a minimum distance of 2 meters is not possible, the addition of screens or dividing panels is extremely important. Add front, side and back screens. The separations must be high and easy to clean.



Separation panels for any operative desk

There are several solutions to separate work areas from workstations already in use by both Martex and/or other manufacturers.

- With panels to be placed on existing screens. This solution allows to NOT replace the screens in use, but to overlap them in an easy and quick way without the use of hardware but just quick release screen bracket.
- With freestanding plexiglass screen for a moveable division of space.



Screen H. 600 mm

In the bench you can use front and side screens H. 600 mm available in various materials and finishes. Melamine and eco-leather for easy cleaning or in antibacterial fabric for a safer product.



Side storages

Another side separation solution can be achieved by combining desk containers available in 2 heights H. 750 mm and H. 1100 mm, to which planter or storage boxes can be added.



Bench



3 sides screen

The 3-sided screen allows single desk separation, whether it can be sit to stand or fixed.



Sit To Stand with round screen

In the height adjustable bench solutions, in addition to the shared screen H. 600 mm we propose a round screen upholstered in fabric. An aesthetically unique screen that gives personality and hospitality to the work area.

Frontal storage units

Front storage units are also an excellent solution providing both separation and containment.



NET partition

The workstations can also be separated by 30 mm thick NET panels.

Through the “brick to brick” system it is possible to use different materials for the lower and upper part, such as panels upholstered in fabric, glass, lacquered panels, writable or pinnable boards, or in soundproofing material.



Meeting

Meetings should now be run with fewer people or in larger spaces with significant distance between them.

It would be useful to establish protocols for the number of people who can occupy an enclosed space and make sure the room allows for physical removal.

Use open spaces for meetings of more than five people, using flexible furniture with mobile whiteboards and screens to create boundaries.



NUCLEO meeting

NUCLEO range allows you to create small meeting rooms for just 2 or 3 people. The tables are wall-mounted and can be 750 or 1100 mm high.

Meeting rooms with NUCLEO freestanding panels. NUCLEO panels create small meeting rooms in open space situations. If required, they can be reconfigured to create new solutions.



Informal meeting room

Sometimes it takes very little to create cosy and functional environments: a 1200 mm diameter meeting table, a freestanding panel on wheels with a hanging whiteboard, the pantry unit and some poufs.



FLOW + NUCLEO

The spaces dedicated to informal meetings encourage collaboration and interaction to share and transfer knowledge. In the composition we have combined the FLOW TV unit with NUCLEO pouf complete with backrests, armrest and side table.

Temporary work

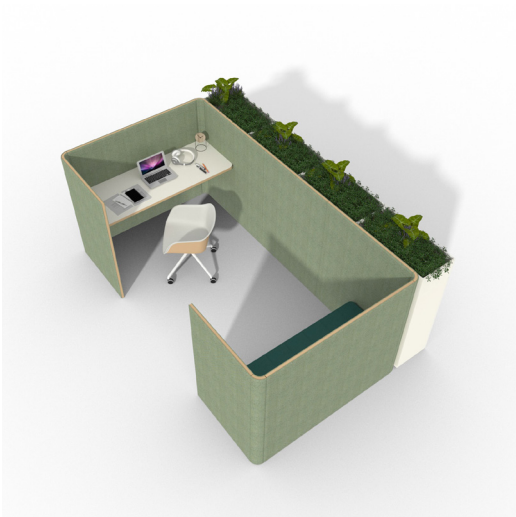
At this time, preference is given to “owned” rather than “shared” desking spaces. If positions are shared, the “clean in, clean out” policy needs to be adopted.

Preferring fabric such as eco-leather or using antibacterial or antimicrobial fabrics.



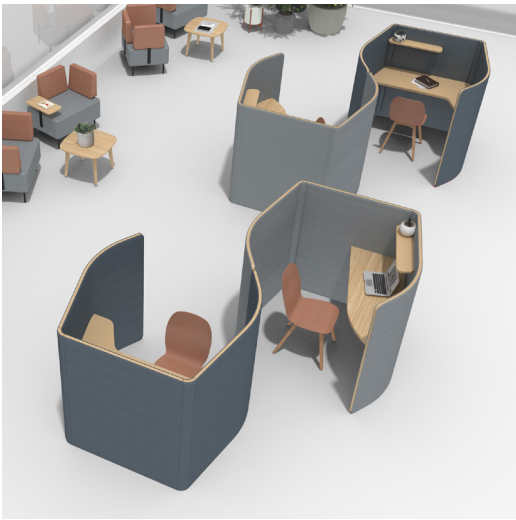
Temporary work 01

The temporary work stations guarantee privacy and isolation but also contact with the surrounding environment.



Temporary work 02

The possibility of placing several modules side by side, allows to create open and curved compositions, in which privacy, conviviality and operativeness live together pleasantly.



Temporary work



Temporary work 03

The plus of this product is that it can be easily moved and therefore reconfigured at any time.



Temporary work 05

The modularity of the various elements of Nucleo allow you to easily create an infinite number of solutions, characterized by the warmth of the fabric, the elegance of wood and a pleasant feeling of acoustic comfort.



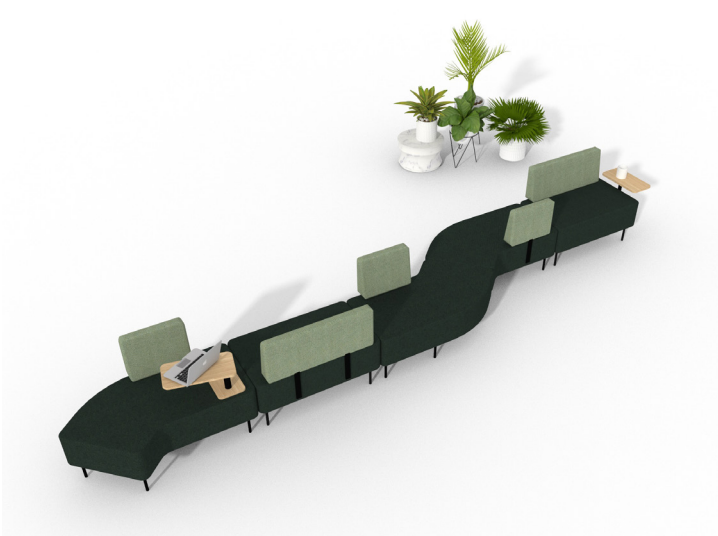
Temporary work 04

The compositions can be configured in single, double or repeated stations without limits in different layout proposals according to requirements.



Common spaces

In the case of new layouts, preference should be given to single elements like pouff with a separation of at least 2 metres or positioned in a chequered pattern.
Sofas should be marked for single use or divided by mobile separations.



“Serpentine”
In the serpentine composition, optional backrests can be added at any time to indicate the suggested sitting direction.



NUCLEO Business armchair
NUCLEO business is not just a comfortable chair for relaxation areas but can be a real work area.
The backrest provides a visual and acoustic shield that facilitates concentration and privacy, the swivel tables and integrated electrification allow you to work being connected.



Separable and aggregatable sofas
Nucleo poufs are part of a modular upholstered furniture system that can be reconfigured at any time. They are used both in single elements and in articulated compositions, where shape and colours play a role. They can also be customised with pivoting tops or fixed tables and plug-in sockets with integrated USB.



OFFICE SWEET HOME

Quarantine has changed our work routine. We have found that some people have switched easily from office work to work from home mode and will want to be able to work remotely in the future. Others struggled because of inadequate space, non-functional furnishings, lack of equipment and poor connection. Some have faced challenges that balance work needs and family expectations.

The focus has therefore shifted to the exercise of organizing our new “offices” in the best way possible.

The aim is to obtain a satisfactory location, which encourages concentration and privacy, where you can focus and participate to video calls in adequate silence and tranquillity. A corner in which we find “our things”, without the obligation to restore them from scratch, with everything we need to work with at the usual comfort. A place that can be restored to its domestic purpose at the end of daily tasks or whenever the situation calls for it.

Home office

These are some of the solutions that can be adopted at home, not only by those who work but also by those who study, those who need privacy or need a place for video calls, to write, read or think.



Home office 01

In small rooms the ideal solution is to have a portion of free wall where to install some shelves, a desk of appropriate size placed underneath and a chest of drawers to store things



Home office 02

Using improvised workstations every day can trigger a number of symptoms that can become chronic such as back and/or neck pain. That's why sit-to-stand solutions can be ideal for changing your posture to find the right balance between sitting and standing.



Home office 03

Those who have a little more space at their disposal can opt for a small equipped wall, a boiserie to be furnished with shelves or a container that can be used as a bookcase or an operative desk if necessary.



MATERIALS

What materials to use during this period? What are the Martex proposals?

MELAMINE and WOOD

Wood is a unique natural material that creates well-being thanks to the tactility of the surfaces and the warmth it transmits. Melamine is the result of in-depth research to respond to characteristics of resistance, durability and stability over time, both are hygienic and easy to clean.

GLASS

Glass is one of the most fascinating materials, a symbol of elegance and purity, which maintains its beauty over time. It is scratch and aging resistant material and is easily recyclable. It is hygienic, easy to clean as it does not retain dirt and can be sanitized and disinfected with alcohol-based products.

FABRICS

Surely cotton or wool fabrics could lose interest compared to materials such as leather and eco-leather that at the moment are privileged thanks to their ease of cleaning.

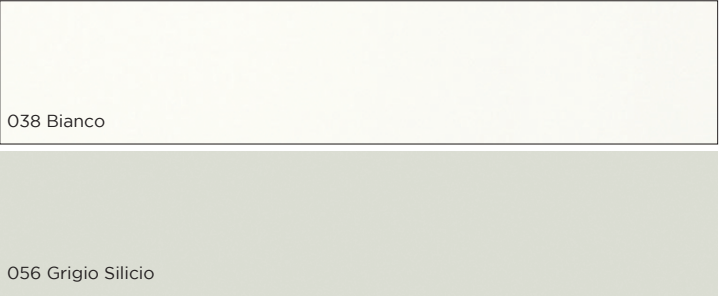
PLEXIGLASS

Plexiglass is lighter and more resistant than glass but over time it tends to yellow, it is also very delicate and scratches easily, it must be cleaned with a soft cloth without the use of chemicals or alcohol-based.

New Martex proposals

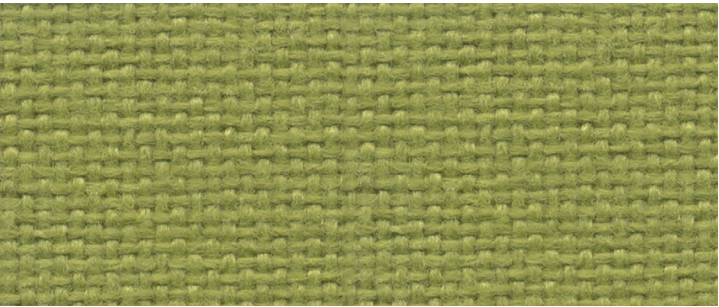
At the moment, preference is given to owned rather than shared desking spaces, but also shared places with a policy of “clean in, clean out”.

The fabrics used are antibacterial or antimicrobial.



BIANCO and SILICIO Melamine

Martex surfaces in white melamine are hygienically sealed. These surfaces are usually easy to clean, can be disinfected very well and have an antibacterial effect. Ask for technical data sheet.



Antibacterial fabric Cat. D+

We have included in our range the Trevira CS Bioactive fabric, which has an antibacterial agent incorporated in the fabric structure, an antibacterial agent that exerts a permanent antimicrobial effect that is not affected by washing or use over time. Unlike other fabrics in the market, it is therefore not an additional treatment to which the fabric is subjected, but is intrinsic to the fabric itself.



Anti-bacterial / Antimicrobial fabric

On request we offer a 100% recycled cotton fabric with antimicrobial and anti-bacterial treatment with Viroblock certified technology. The HeiQ Viroblock NPJ03 treatment is able to destroy bacteria and eliminate some of the most known viruses that attack humans. Viroblock technology has effective protection against surface contamination and transmission of viruses and bacteria that tend to proliferate on textile fabrics.

All rights are reserved. No part of this publication may be reproduced, or transmitted in any form or by any means, electronic, mechanical, photocopying, recording or otherwise, without prior permission of Martex S.p.A.. Martex reserves the rights at all time to apply modifications for the functional or qualitative improvement of its products. Texts and drawings present in this brochure have a divulgative purpose: for every technical and dimensional aspect please refer to the company's price lists and their relative updatings.

CREDITS

Design: Mkt Martex

Edition: June 2020

Martex S.p.A.
via Sagré, 19 - 33080
Prata di Pordenone (PN) Italy
tel +39 0434 602310
fax +39 0434 602319
info@martex.it
www.martex.it



ISO 9001